

Your local property experts

PhilipAlexander is your local independent estate agent. Every year, hundreds of people entrust us to help them buy, sell, let or manage a property.

Our local knowledge, competitive rates and honest attitude are the reasons so many people choose us over a corporate chain. But don't take our word for it, read what they have to say at philipalexander.net/reviews

You'll find us on Hornsey High Street. Pop in for a chat or call us today.

Call **020 8342 9444** to speak to one of our friendly team.

trustworthy
faultless service
straightforward
honest *a breath of*
professional *fresh air*
accessible
friendly *dependable*
responsive
transparent

Quotes taken from independent Google reviews 2006 to 2016



PhilipAlexander Estate Agents
52 High Street, Hornsey
London N8 7NX

philipalexander
Thinking local

020 8342 9444
www.philipalexander.net

philipalexander
Thinking local



130 Collingwood Court, New Barnet EN5

£1,425 FOR SALE

Apartment - Purpose Built

1 1 1



130 Collingwood Court, New Barnet £1,425 Per

Description

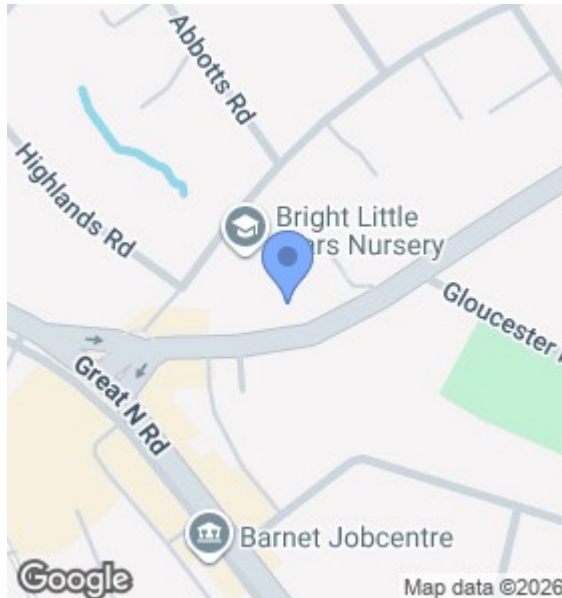
A well-presented one-bedroom ground floor apartment set within a purpose-built development, ideally located just a short walk from High Barnet Underground Station and the wide range of shops, cafés, and amenities along the Great North Road.

The property offers a spacious and bright living room, a generously sized double bedroom, a separate kitchen with ample storage, and a large, modern shower room. The apartment further benefits from residents' parking, making it a practical and convenient choice for commuters and professionals alike.

- Ground floor one-bedroom apartment

Key Features

| | |
|------------------------|-----------------|
| Tenure | to be confirmed |
| Lease Expires | to be confirmed |
| Ground Rent | to be confirmed |
| Service Charge | Barnet |
| Local Authority | C |
| Council Tax | |

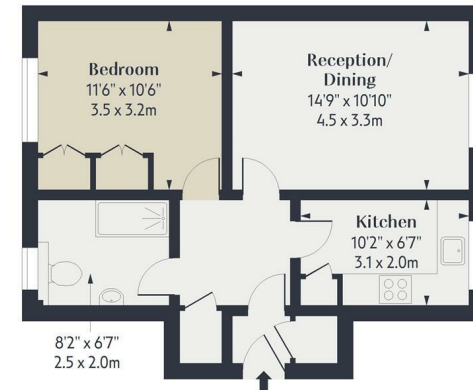


Floorplan

Collingwood Court EN5

Approx. Gross Internal Area 512 Sq Ft - 47.56 Sq M

Philip Alexander



Ground Floor
Floor Area 512 Sq Ft - 47.56 Sq M



Measured according to RICS IPMS2. Floor plan is for illustrative purposes only and is not to scale. Every attempt has been made to ensure the accuracy of the floor plan shown, however all measurements, fixtures, fittings and data shown are an approximate interpretation for illustrative purposes only. 1 sq m = 10.76 sq feet.

Created for Philip Alexander by lpaplus.com Date: 1/5/2026

Thinking local

EPC

| Energy Efficiency Rating | | Current | Potential |
|---|-------------------------|---------|-----------|
| Very energy efficient - lower running costs | | | |
| (92 plus) A | | | |
| (81-91) B | | | |
| (69-80) C | | | |
| (55-68) D | | 66 | 76 |
| (39-54) E | | | |
| (21-38) F | | | |
| (1-20) G | | | |
| Not energy efficient - higher running costs | | | |
| England & Wales | EU Directive 2002/91/EC | | |

The Energy Performance Certificate (EPC) shows a property's energy efficiency and carbon emissions impact on a scale from 'A' to 'G', where 'A' is most efficient and 'G' least efficient. Better efficiency means lower energy costs. The EPC shows both the properties' current efficiency rating and its potential rating if all possible improvements were made.